

Cabinet	AGENDA ITEM No. 5.1
29 March 2010	PUBLIC REPORT

Cabinet Member(s) responsible:	Cllr Matthew Lee Cabinet Member for Environment Capital and Culture Cllr Sam Dalton Cabinet Advisor for Environment Capital and Culture	
Contact Officer(s):	Paul Phillipson – Executive Director of Operations Charlotte Palmer – Climate Change Team Manager	Tel. 01733 453455 01733 453538

CARBON MANAGEMENT ACTION PLAN (CMAP)

R E C O M M E N D A T I O N S	
FROM : Environment Capital Scrutiny Committee	Deadline date : The CMAP is due to go to Full Council on 14/04/2010
<p>The Carbon Management Action Plan (CMAP) formally commits Peterborough City Council to achieve a stretching, yet realistic target to reduce carbon emissions by 35% of 2008/09 levels by 2014. The action plan requires significant commitment and investment, this will be achieved through invest to save mechanisms and external funding initiatives where possible. This CMAP formalises the authority's commitment to lead by example and create the UK's Environment Capital.</p> <p>In order to adopt the CMAP Cabinet is asked to:</p> <p>Approve the document whilst committing to support the continuation of the Carbon Management Programme Board and the Carbon Management Team.</p>	

1. ORIGIN OF REPORT

This report is submitted to Cabinet following approval from the Corporate Management Team, Group leaders and the Environment Capital Scrutiny Committee (15 February 2010).

2. PURPOSE AND REASON FOR REPORT

The purpose of this report is to enable Cabinet to review the CMAP. The CMAP is the outcome of a ten month programme of work that Peterborough City Council (PCC) has undertaken as part of the Carbon Trust's Local Authority Carbon Management (LACM) programme. Whilst PCC has undertaken various one-off initiatives previously which have had a positive effect on the organisation's overall carbon emissions, this programme of work ensures initiatives are undertaken in a planned and measured way in order to comply with various schemes the organisation has a legal duty to comply with.

Two versions of the CMAP have been produced;

- Full CMAP, this will be a working document available upon request
- Concise CMAP which will be available internally and externally via the City Council's website – Appendix A

Two documents have been produced in order to ensure this information is as accessible as possible.

The CMAP details PCC's carbon management strategy, baseline emissions, reduction target, outline reduction projects, financing options, embedding actions and programme management. This CMAP has been produced by the Climate Change Team with support and guidance from the Carbon Trust and PCC's Carbon Management Programme Board chaired by the Executive Director of Operations. The CMAP formally commits PCC to achieve a carbon emissions reduction of 35% of 2008/09 levels by 2014 and supports the city's aspiration to become the UK's Environment Capital, demonstrating leadership in the field. In addition, this work creates efficiencies within the organisation and reduces PCC's long term exposure to risk. The CMAP is due to go before Full Council in April 2010.

All projects outlined in the CMAP are indicative at this stage and will be subject to the standard project approval within PCC. Projects will be undertaken by the relevant service area, overseen by the Climate Change Team and will be accountable to the Programme Board.

This report is for Cabinet to consider under its Terms of Reference No. 3.2.3 'to take a leading role in promoting the economic, environmental and social well being of the area'.

3. TIMESCALE

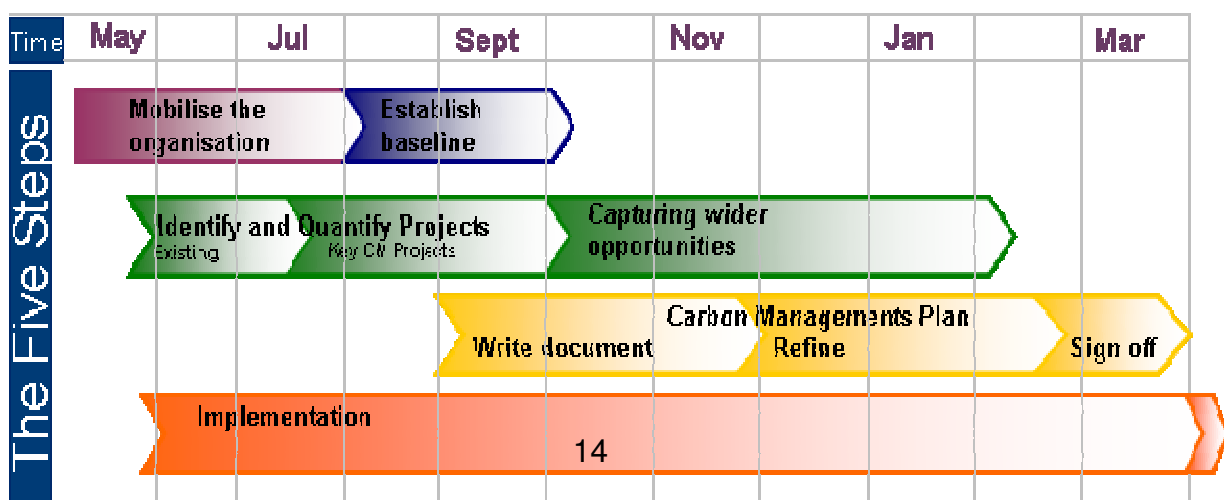
Is this a Major Policy Item/Statutory Plan?	YES	If Yes, date for relevant Cabinet Meeting	29 March 2010
Date for relevant Council meeting	14 April 2010	Date for submission to Government Dept (please specify which Government Dept)	N/A – completed as part of the Carbon Trust LACM programme

4. BACKGROUND

PCC embarked upon phase seven of the Carbon Trust's Local Authority Carbon Management Programme in 2009. The programme is designed to support the authority in establishing a robust baseline of carbon emissions and produce a carbon management plan to support the authority's aim to reduce emissions by up to 35% of 2008/09 levels over five years.

This work is required to comply with the Carbon Reduction Commitment (CRC) and National Indicators 185 and 186, the governments' delivery mechanism for achieving targets set within the Climate Change Act. This work will have significant and wide reaching impacts upon the organisation. Corporate Carbon Management focuses specifically upon identifying, recording, monitoring and reducing carbon emissions across PCC and its operations.

In order to drive the programme forward, two working groups were established: the Programme Board chaired by the Executive Director of Operations, Paul Phillipson, and the Carbon Management Team chaired by the Climate Change Team Manager, Charlotte Palmer. Please see Appendix B for a list of the members of both groups. Throughout the programme both groups have fed in to and directed the process through the following stages:



Baseline carbon emissions data for the 2008/09 financial year have been collated in line with the requirements of NI185, avoiding duplication of effort. The following data forms the baseline emissions for the authority.

Total KWh of energy used within all properties owned by PCC and used to deliver a service on our behalf, including schools
Total KWh of energy used within all properties operated by PCC in order to deliver a service, including schools (leased in, i.e. Manor Drive)
Total KWh of energy used to provide all forms of Street Lighting within the remit of Peterborough City Council
Total KWh of energy used by all outsourced service providers that deliver a service on behalf of Peterborough City Council
Total volume of fuel or distance travelled by all outsourced service providers that deliver a service on behalf of Peterborough City Council
Total volume of fuel or distance travelled by all fleet vehicles
Total volume of fuel or distance travelled by all employees in order to carry out their role including car, train and aeroplane
Total volume of fuel or distance travelled by all vehicles providing a service on behalf of Peterborough City Council including school transport and Community Link services

The CMAP details the results of the collation of baseline emissions and further details how the reduction targets will be achieved.

4.2 **LINKS TO THE SUSTAINABLE COMMUNITY STRATEGY AND LOCAL AREA AGREEMENT**

This area of work relates directly to the Sustainable Communities Strategy, specifically the priority to create the UK's Environment Capital and deliver substantial and truly sustainable growth. This area of work, whilst governed within the National Indicator set, allows PCC to get its own house in order. PCC will be in a suitable position to lead action with local partners and residents, ensuring the city is suitably placed to deal with the inevitable consequences that climate change will bring.

The National Indicator that relates specifically to PCC's carbon emissions, NI185, is not included within the LAA because it was felt that the indicator was too specific to one organisation and therefore not ideal for a partnership document. NI 186, per capita reduction in CO₂ emissions, is included.

In addition, this work significantly contributes to PCC's preparation for the Carbon Reduction scheme, ensuring the organisation is suitably placed to achieve the ongoing reductions required.

5. **CONSULTATION**

The CMAP has been produced by the Climate Change Team alongside the Programme Board and the Carbon Management Team. Both meetings are also attended by the Cabinet Advisor for Environment Capital and Culture, Cllr Samantha Dalton. The concise version of the CMAP (appendix A) will be made available on the Council's internal and external website, we will also undertake promotional work to raise awareness of the programme and recruit a team of volunteer Green Champions to drive forward awareness at officer level. The CMAP is progressing through the democratic approval process as follows:

Group	Date
CMT	9 February 2010
Group Leaders	22 February 2010
Environment Capital Scrutiny Committee	15 February 2010
Cabinet	29 March 2010
Full Council	14 April 2010

6. ANTICIPATED OUTCOMES

This CMAP formalises the authority's commitment to lead by example and create the UK's Environment Capital. In order to adopt the CMAP Cabinet is asked to approve the document, whilst committing to support the continuation of the Carbon Management Programme Board the Carbon Management Team and Climate Change Team in its respective efforts to achieve the 35% reduction target.

7. REASONS FOR RECOMMENDATIONS

This work is required to comply with the Carbon Reduction Commitment (CRC) and National Indicators 185 and 186, the governments' delivery mechanism for achieving targets set within the Climate Change Act. The CMAP is also the final stage of the 10 month programme of work undertaken with the Carbon Trust and signifies successful completion of the programme.

8. ALTERNATIVE OPTIONS CONSIDERED

8.1 COMPLY WITH TARGETS AS LAID OUT IN THE CLIMATE CHANGE ACT

Prior to embarking upon the Carbon Trust programme the Climate Change Team considered the possibility of devising a programme of work to achieve the carbon reduction targets as laid out in the climate change act. It was felt however that early action to achieve these targets, ahead of the national framework, would allow Peterborough to lead by example, demonstrating commitment to our Environment Capital aspirations and also allow PCC to benefit early from the efficiencies carbon reduction will achieve.

8.2 'BUSINESS AS USUAL' SCENARIO

Section 3 'Emissions baseline and projection' of appendix A provides details the 'business as usual' scenario and value at stake of not undertaking this programme of work.

9. IMPLICATIONS

This document will have the following implications:

- **Financial** - value at stake predictions show that failure to achieve the emissions reduction target will amount to costs of £10m and 41,341 tonnes of carbon dioxide by 2014. In addition, with the introduction of the Carbon Reduction Commitment Energy Efficiency Scheme in 2011, PCC's current level of energy consumption could cost a further £360,000 per annum.
- **Legal** – this CMAP and the actions arising from it ensures PCC is suitable placed to comply with the requirements laid out in the Climate Change Act. In addition this also supports PCC's participation in the CRC.
- **Human Resources** - the programme aims to embed a cultural change at the heart of PCC operations, ensuring environmental impact is considered in all of the decisions made and responsibility is recognised at officer level.
- **Property** – in order to achieve the reductions laid out in the CMAP significant works will be required across PCC's estate to increase energy efficiency. These will be

dealt with as individual projects and will follow the full project procedure operating within PCC.

- **Environmental** – by implementing the actions associated with this plan we will limit the organisation’s environmental impact, leading by example.

This CMAP has been produced in conjunction with the relevant officers from across the organisation.

10. BACKGROUND DOCUMENTS

N/A

11. APPENDIX

Appendix A – Concise Peterborough City Council Carbon Management Action Plan condensed version

Appendix B – Programme Board and Carbon Management Team members

This page is intentionally left blank